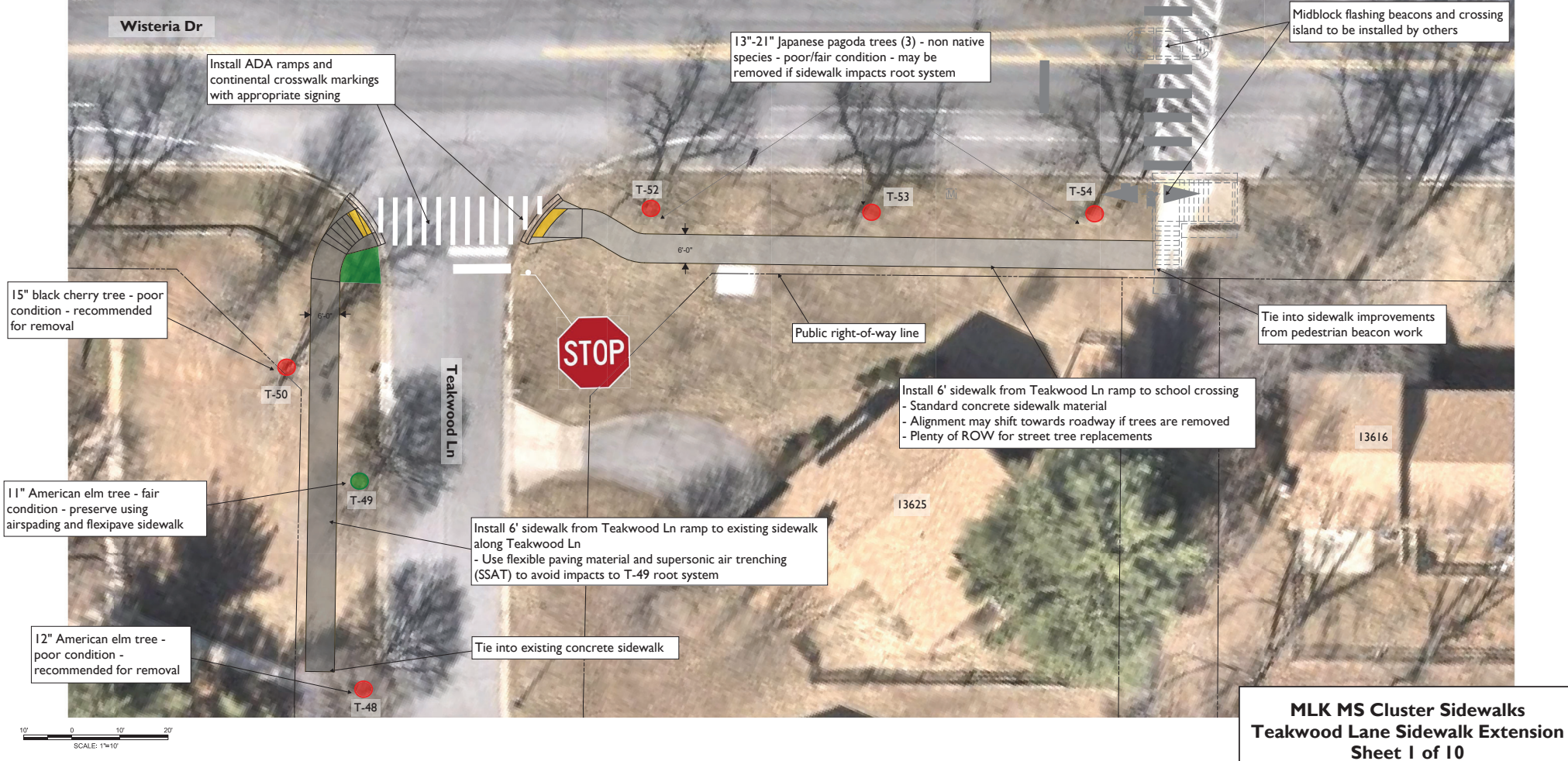


**MLK MS Cluster  
Pedestrian Safety Projects  
Overview Map**



Tree ID	Common Name	DBH	Condition	Condition Comments	Tree Status	Recommendations
T48	AMERICAN ELM	12	POOR	EXTENSIVE SAPSUCKER DAMAGE, DEAD WOOD	REMOVE	
T49	AMERICAN ELM	11	FAIR/POOR	EXTENSIVE SAPSUCKER DAMAGE, DEAD WOOD, EXPOSED AND GIRDLING ROOTS	PRESERVE	SUPERSONIC AIR TRENCHING (SSAT) FOR EXCAVATION, EXCAVATED FLEXIBLE PAVEMENT MATERIAL
T50	BLACK CHERRY	15	POOR	EXTENSIVE DEAD WOOD, LIMBS PCSE POTENTIAL HAZARD	REMOVE	
T52	JAPANESE PAGODA TREE	21	POOR	TRUNK IS MOSTLY ROTTEN WITH LARGE HOLES VISIBLE, EXPOSED ROOTS, SPLIT ABOVE DBH IMBRICATED BARK	REMOVE	
T53	JAPANESE PAGODA TREE	21	FAIR/POOR	BARK FLAKING OFF, LARGE LATERAL TRUNK WOUND, TRUNK DECAY	REMOVE	
T54	JAPANESE PAGODA TREE	13	FAIR/POOR	LARGE TRUNK WOUNDS, SPARSE CANOPY, EXTENSIVE DEAD WOOD	REMOVE	

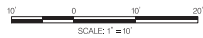
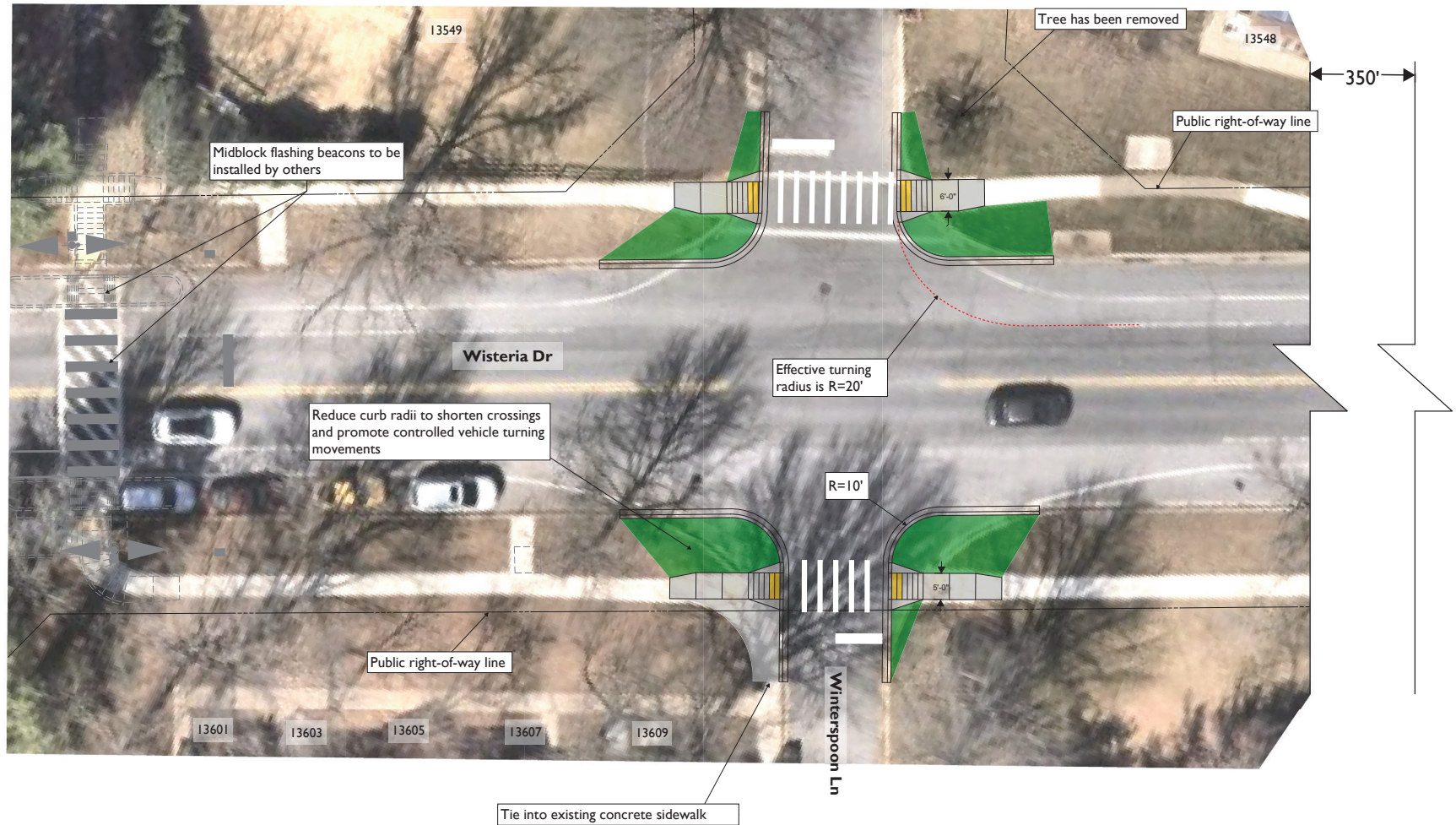




Tree ID	Common Name	DBH	Condition	Condition Comments	Tree Status	Recommendations
T45	FRUITLESS SWEETGUM	3	GOOD		PRESERVE	
T46	EASTERN WHITE PINE	14	GOOD		PRESERVE	
T47	RED MAPLE	25	GOOD/FAIR	EXPOSED AND GIRDLING ROOTS, IMBRICATED BARK, SPLIT ABOVE DBH	PRESERVE	ROOT PRUNE UP TO EDGE OF PROPOSED SIDEWALK



20' 0 20' 40'  
SCALE: 1"=20'





13400

350'

Public right-of-way line



Winterspoon Ln

Install ADA ramp and continental crosswalk markings with appropriate signing

6'-0"

Effective turning radius is  $R=20'$

Wisteria Dr

Reduce curb radii to shorten crossings and promote controlled vehicle turning movements

$R=10'$

Tie into existing sidewalk

Larentia Dr

Public right-of-way line

10' 0' 10' 20'  
SCALE: 1" = 10'

**MLK MS Cluster Sidewalks**  
**Wisteria Dr at**  
**Winterspoon Ln / Larentia Dr**  
**Sheet 4 of 10**



Reduce curb radii and install curb extensions to shorten crossings, extend sight lines, and promote controlled vehicle turning movements

Install high visibility markings for existing crosswalks

14" American sycamore tree - poor condition - recommended for removal

Install 6' sidewalk along east side of Waldorf Dr between Wisteria Dr and Wynnfield Dr - Use flexible paving material and supersonic air trenching (SSAT) to avoid impacts to tree root systems

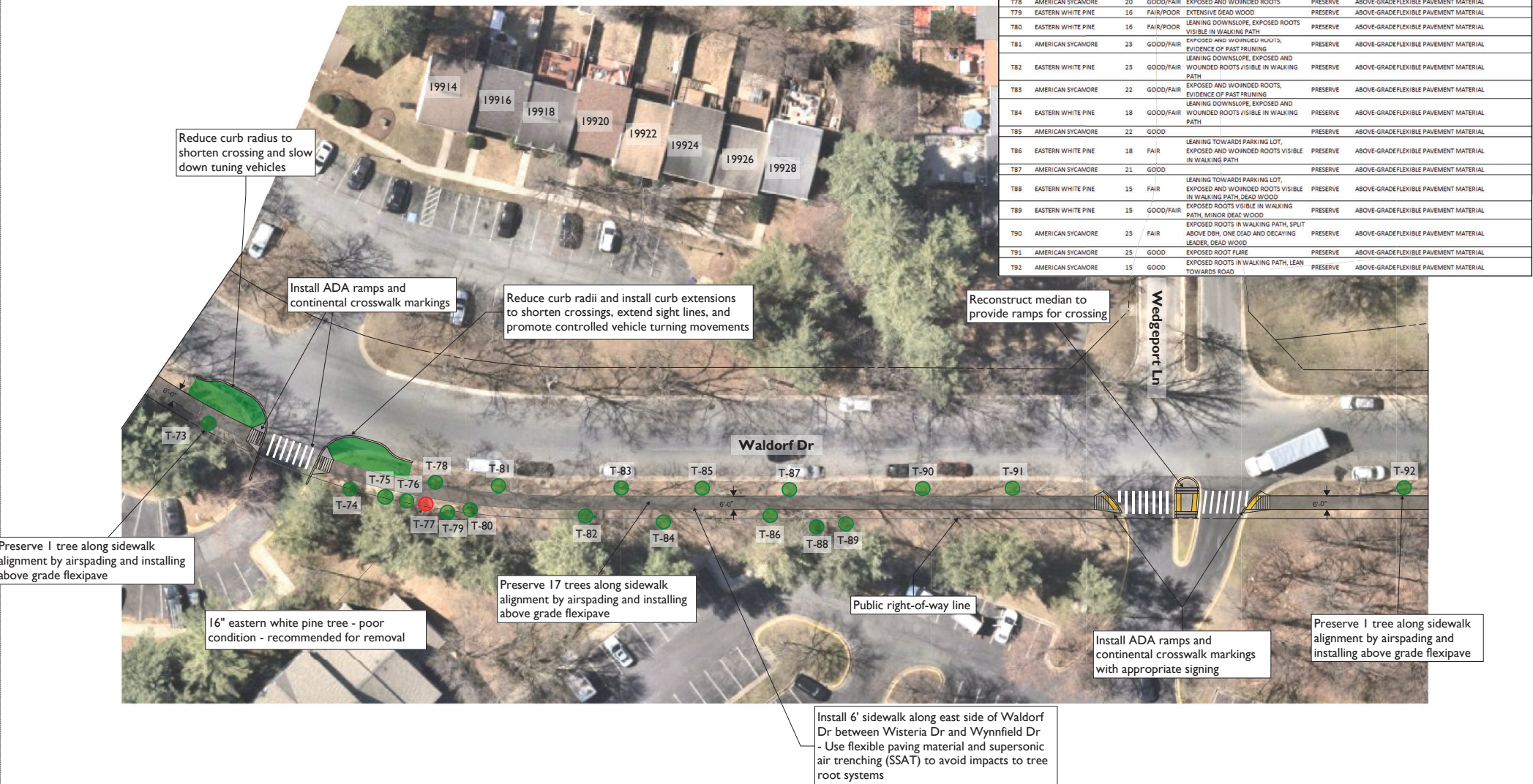
Preserve 17 trees along sidewalk alignment by airspading and installing above grade flexipave

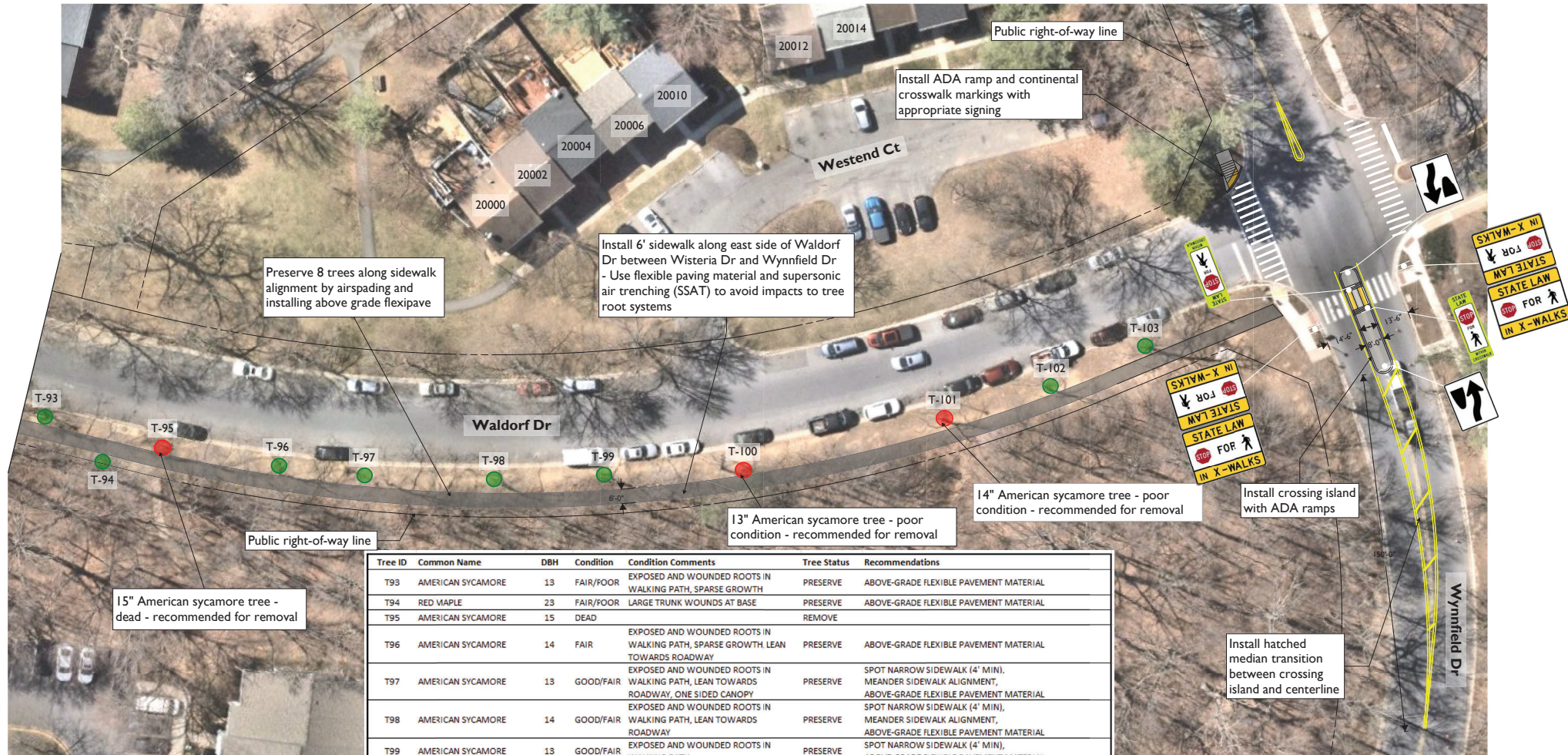
Tree ID	Common Name	DBH	Condition	Condition Comments	Tree Status	Recommendations
T55	AMERICAN SYCAMORE	14	POOR	EXTENSIVE DEAD WOOD, SPARSE GROWTH	REMOVE	
T56	BRADFORD PEAR	18	FAIR	SLIGHT LEAN, SPLIT ABOVE DBH, DEAD WOOD, EXPOSED AND GIRDLING ROOTS	PRESERVE	SUPersonic AIR TRENCHING (SSAT) FOR EXCAVATION, ABOVE-GRADE FLEXIBLE PAVEMENT MATERIAL
T57	EASTERN WHITE PINE	13	FAIR/POOR	MAJOR NEEDLE LOSS, SPARSE GROWTH	PRESERVE	SUPersonic AIR TRENCHING (SSAT) FOR EXCAVATION, ABOVE-GRADE FLEXIBLE PAVEMENT MATERIAL
T58	EASTERN WHITE PINE	11	FAIR/POOR	MAJOR NEEDLE LOSS, SPARSE GROWTH, EXTENSIVE DEAD WOOD	PRESERVE	SUPersonic AIR TRENCHING (SSAT) FOR EXCAVATION, ABOVE-GRADE FLEXIBLE PAVEMENT MATERIAL
T59	EASTERN WHITE PINE	14	FAIR	MINOR EXPOSED ROOTS DOWNSLOPE, MINOR DEAD WOOD	PRESERVE	SUPersonic AIR TRENCHING (SSAT) FOR EXCAVATION, ABOVE-GRADE FLEXIBLE PAVEMENT MATERIAL
T60	BRADFORD PEAR	22	FAIR	EVIDENCE OF PAST PRUNING, HEALED OVER BRANCH WOUNDS, EXPOSED ROOTS, SPLIT ABOVE DBH, IMBRICATED BARK	PRESERVE	SUPersonic AIR TRENCHING (SSAT) FOR EXCAVATION, ABOVE-GRADE FLEXIBLE PAVEMENT MATERIAL
T61	AMERICAN SYCAMORE	16	FAIR	EVIDENCE OF PAST PRUNING, EXPOSED ROOTS, SPARSE GROWTH IN CANOPY	PRESERVE	ABOVE-GRADE FLEXIBLE PAVEMENT MATERIAL
T62	EASTERN WHITE PINE	16	GOOD/FAIR	MINOR DEAD WOOD, EXPOSED AND GIRDLING ROOTS	PRESERVE	SUPersonic AIR TRENCHING (SSAT) FOR EXCAVATION, ABOVE-GRADE FLEXIBLE PAVEMENT MATERIAL
T63	AMERICAN SYCAMORE	19	FAIR	EVIDENCE OF PAST PRUNING, EXPOSED AND WOUNDED ROOTS	PRESERVE	ABOVE-GRADE FLEXIBLE PAVEMENT MATERIAL
T64	AMERICAN SYCAMORE	19	FAIR	DEAD LOWER LIMBS, EXPOSED ROOTS	PRESERVE	ABOVE-GRADE FLEXIBLE PAVEMENT MATERIAL
T65	EASTERN WHITE PINE	16	FAIR	EXTENSIVE EXPOSED AND GIRDLING ROOTS, LEAN TOWARDS PARKING LOT, DEAD WOOD	PRESERVE	SUPersonic AIR TRENCHING (SSAT) FOR EXCAVATION, ABOVE-GRADE FLEXIBLE PAVEMENT MATERIAL
T66	EASTERN WHITE PINE	16	FAIR	EXPOSED ROOTS, DEAD WOOD	PRESERVE	SUPersonic AIR TRENCHING (SSAT) FOR EXCAVATION, ABOVE-GRADE FLEXIBLE PAVEMENT MATERIAL
T67	AMERICAN SYCAMORE	17	GOOD/FAIR	EXPOSED ROOTS, FUNGAL GROWTH ON ONE BRANCH, OLD MINOR TRUNK WOUNDS	PRESERVE	ABOVE-GRADE FLEXIBLE PAVEMENT MATERIAL
T68	EASTERN WHITE PINE	17	FAIR/POOR	LEAN TOWARDS PARKING LOT, EXTENSIVE DEAD WOOD, EXPOSED ROOTS	PRESERVE	SUPersonic AIR TRENCHING (SSAT) FOR EXCAVATION, ABOVE-GRADE FLEXIBLE PAVEMENT MATERIAL
T69	AMERICAN SYCAMORE	18	FAIR	EXPOSED AND WOUNDED ROOTS, DEAD WOOD, SPARSE CANOPY	PRESERVE	ABOVE-GRADE FLEXIBLE PAVEMENT MATERIAL
T70	EASTERN WHITE PINE	21	GOOD/FAIR	LEAN TOWARDS PARKING LOT, EXPOSED ROOTS DOWNSLOPE, MINOR DEAD WOOD	PRESERVE	SUPersonic AIR TRENCHING (SSAT) FOR EXCAVATION, ABOVE-GRADE FLEXIBLE PAVEMENT MATERIAL
T71	AMERICAN SYCAMORE	22	GOOD/FAIR	EXPOSED AND WOUNDED ROOTS (MOWER DAMAGE)	PRESERVE	ABOVE-GRADE FLEXIBLE PAVEMENT MATERIAL
T72	AMERICAN SYCAMORE	19	GOOD/FAIR	EXPOSED AND MOWER DAMAGED ROOTS	PRESERVE	ABOVE-GRADE FLEXIBLE PAVEMENT MATERIAL

0 20' 40'  
SCALE: 1"=20'



Tree ID	Common Name	DBH	Condition	Condition Comments	Tree Status	Recommendations
T73	AMERICAN SYCAMORE	17	GOOD/FAIR	EXPOSED AND WOUNDED ABOVE GRADE ROOTS	PRESERVE	ABOVE-GRADE/FLEXIBLE PAVEMENT MATERIAL
T74	EASTERN WHITE PINE	18	GOOD/FAIR	EXPOSED AND GIRDLING ROOTS, LEAN TOWARDS PARKING LOT, DEAD WOOD	PRESERVE	SUPERSONIC AIR TRENCHING (SSAT) FOR EXCAVATION, ABOVE-GRADE/FLEXIBLE PAVEMENT MATERIAL
T75	EASTERN WHITE PINE	13	FAIR/POOR	EXPOSED AND GIRDLING ROOTS, LEANING DOWNSLOPE, EXTENSIVE DEAD WOOD	PRESERVE	SUPERSONIC AIR TRENCHING (SSAT) FOR EXCAVATION, ABOVE-GRADE/FLEXIBLE PAVEMENT MATERIAL
T76	EASTERN WHITE PINE	17	GOOD/FAIR	EXPOSED AND GIRDLING ROOTS, MINOR DEAD WOOD, DEAD WOOD	PRESERVE	SUPERSONIC AIR TRENCHING (SSAT) FOR EXCAVATION, ABOVE-GRADE/FLEXIBLE PAVEMENT MATERIAL
T77	EASTERN WHITE PINE	16	POOR	EVIDENCE OF TRUNK DECAY, EXTENSIVE DEAD WOOD	REMOVE	
T78	AMERICAN SYCAMORE	20	GOOD/FAIR	EXPOSED AND WOUNDED ROOTS	PRESERVE	ABOVE-GRADE/FLEXIBLE PAVEMENT MATERIAL
T79	EASTERN WHITE PINE	16	FAIR/POOR	EXTENSIVE DEAD WOOD	PRESERVE	ABOVE-GRADE/FLEXIBLE PAVEMENT MATERIAL
T80	EASTERN WHITE PINE	16	FAIR/POOR	LEANING DOWNSLOPE, EXPOSED ROOTS VISIBLE IN WALKING PATH	PRESERVE	ABOVE-GRADE/FLEXIBLE PAVEMENT MATERIAL
T81	AMERICAN SYCAMORE	28	GOOD/FAIR	EXPOSED AND WOUNDED ROOTS, EVIDENCE OF PAST PRUNING	PRESERVE	ABOVE-GRADE/FLEXIBLE PAVEMENT MATERIAL
T82	EASTERN WHITE PINE	23	GOOD/FAIR	LEANING DOWNSLOPE, EXPOSED AND WOUNDED ROOTS VISIBLE IN WALKING PATH	PRESERVE	ABOVE-GRADE/FLEXIBLE PAVEMENT MATERIAL
T83	AMERICAN SYCAMORE	22	GOOD/FAIR	EXPOSED AND WOUNDED ROOTS, EVIDENCE OF PAST PRUNING	PRESERVE	ABOVE-GRADE/FLEXIBLE PAVEMENT MATERIAL
T84	EASTERN WHITE PINE	18	GOOD/FAIR	LEANING DOWNSLOPE, EXPOSED AND WOUNDED ROOTS VISIBLE IN WALKING PATH	PRESERVE	ABOVE-GRADE/FLEXIBLE PAVEMENT MATERIAL
T85	AMERICAN SYCAMORE	22	GOOD		PRESERVE	ABOVE-GRADE/FLEXIBLE PAVEMENT MATERIAL
T86	EASTERN WHITE PINE	18	FAIR	LEANING TOWARDS PARKING LOT, EXPOSED AND WOUNDED ROOTS VISIBLE IN WALKING PATH	PRESERVE	ABOVE-GRADE/FLEXIBLE PAVEMENT MATERIAL
T87	AMERICAN SYCAMORE	21	GOOD		PRESERVE	ABOVE-GRADE/FLEXIBLE PAVEMENT MATERIAL
T88	EASTERN WHITE PINE	15	FAIR	LEANING TOWARDS PARKING LOT, EXPOSED AND WOUNDED ROOTS VISIBLE IN WALKING PATH, DEAD WOOD	PRESERVE	ABOVE-GRADE/FLEXIBLE PAVEMENT MATERIAL
T89	EASTERN WHITE PINE	15	GOOD/FAIR	EXPOSED ROOTS VISIBLE IN WALKING PATH, MINOR DEAD WOOD	PRESERVE	ABOVE-GRADE/FLEXIBLE PAVEMENT MATERIAL
T90	AMERICAN SYCAMORE	23	FAIR	EXPOSED ROOTS IN WALKING PATH, SPLIT ABOVE DBH, ONE DEAD AND DECAYING LEADER, DEAD WOOD	PRESERVE	ABOVE-GRADE/FLEXIBLE PAVEMENT MATERIAL
T91	AMERICAN SYCAMORE	25	GOOD	EXPOSED ROOT FLARE	PRESERVE	ABOVE-GRADE/FLEXIBLE PAVEMENT MATERIAL
T92	AMERICAN SYCAMORE	15	GOOD	EXPOSED ROOTS IN WALKING PATH, LEAN TOWARDS ROAD	PRESERVE	ABOVE-GRADE/FLEXIBLE PAVEMENT MATERIAL





Tree ID	Common Name	DBH	Condition	Condition Comments	Tree Status	Recommendations
T93	AMERICAN SYCAMORE	13	FAIR/POOR	EXPOSED AND WOUNDED ROOTS IN WALKING PATH, SPARSE GROWTH	PRESERVE	ABOVE-GRADE FLEXIBLE PAVEMENT MATERIAL
T94	RED MAPLE	23	FAIR/POOR	LARGE TRUNK WOUNDS AT BASE	PRESERVE	ABOVE-GRADE FLEXIBLE PAVEMENT MATERIAL
T95	AMERICAN SYCAMORE	15	DEAD		REMOVE	
T96	AMERICAN SYCAMORE	14	FAIR	EXPOSED AND WOUNDED ROOTS IN WALKING PATH, SPARSE GROWTH LEAN TOWARDS ROADWAY	PRESERVE	ABOVE-GRADE FLEXIBLE PAVEMENT MATERIAL
T97	AMERICAN SYCAMORE	13	GOOD/FAIR	EXPOSED AND WOUNDED ROOTS IN WALKING PATH, LEAN TOWARDS ROADWAY, ONE SIDED CANOPY	PRESERVE	SPOT NARROW SIDEWALK (4' MIN), MEANDER SIDEWALK ALIGNMENT, ABOVE-GRADE FLEXIBLE PAVEMENT MATERIAL
T98	AMERICAN SYCAMORE	14	GOOD/FAIR	EXPOSED AND WOUNDED ROOTS IN WALKING PATH, LEAN TOWARDS ROADWAY	PRESERVE	SPOT NARROW SIDEWALK (4' MIN), MEANDER SIDEWALK ALIGNMENT, ABOVE-GRADE FLEXIBLE PAVEMENT MATERIAL
T99	AMERICAN SYCAMORE	13	GOOD/FAIR	EXPOSED AND WOUNDED ROOTS IN WALKING PATH	PRESERVE	SPOT NARROW SIDEWALK (4' MIN), ABOVE-GRADE FLEXIBLE PAVEMENT MATERIAL
T100	AMERICAN SYCAMORE	13	POOR	EXPOSED AND WOUNDED ROOTS IN WALKING PATH, MAJOR CANOPY DIEBACK, EXTENSIVE DECAY	REMOVE	
T101	AMERICAN SYCAMORE	14	POOR	EXTENSIVE DECAY, MAJOR CANOPY DIEBACK	REMOVE	
T102	AMERICAN SYCAMORE	11	FAIR/POOR	EXPOSED AND WOUNDED ROOTS, DEAD WOOD, SPARSE GROWTH, EVIDENCE OF PAST PRUNING	PRESERVE	ABOVE-GRADE FLEXIBLE PAVEMENT MATERIAL
T103	AMERICAN SYCAMORE	18	FAIR	EXPOSED AND WOUNDED ROOTS, UPPER CANOPY TRUNK WOUND, EVIDENCE OF PAST PRUNING	PRESERVE	ABOVE-GRADE FLEXIBLE PAVEMENT MATERIAL



Tree ID	Common Name	DBH	Condition	Condition Comments	Tree Status	Recommendations
T130	SWEETGUM	16	GOOD	MINOR EXPOSED AND DAMAGED ROOTS IN THE WALKING PATH	PRESERVE	SPOT NARROW SIDEWALK (4' MIN), ABOVE-GRADE FLEXIBLE PAVEMENT MATERIAL
T131	SWEETGUM	15	GOOD	MINOR EXPOSED AND DAMAGED ROOTS IN THE WALKING PATH	PRESERVE	SPOT NARROW SIDEWALK (4' MIN), ABOVE-GRADE FLEXIBLE PAVEMENT MATERIAL



20' 0 20' 40'  
SCALE: 1"=20'



Tree ID	Common Name	DBH	Condition	Condition Comments	Tree Status	Recommendations
T132	AMERICAN SYCAMORE	15	GOOD	MINOR EXPOSED AND DAMAGED ROOTS IN THE WALKING PATH	PRESERVE	SPOT NARROW SIDEWALK (4' MIN), ABOVE-GRADE FLEXIBLE PAVEMENT MATERIAL
T133	AMERICAN SYCAMORE	14	GOOD	MINOR EXPOSED AND DAMAGED ROOTS IN THE WALKING PATH	PRESERVE	SPOT NARROW SIDEWALK (4' MIN), ABOVE-GRADE FLEXIBLE PAVEMENT MATERIAL
T134	AMERICAN SYCAMORE	15	GOOD	MINOR EXPOSED AND DAMAGED ROOTS IN THE WALKING PATH	PRESERVE	SPOT NARROW SIDEWALK (4' MIN), ABOVE-GRADE FLEXIBLE PAVEMENT MATERIAL
T135	AMERICAN SYCAMORE	15	GOOD	MINOR EXPOSED AND DAMAGED ROOTS IN THE WALKING PATH	PRESERVE	SPOT NARROW SIDEWALK (4' MIN), ABOVE-GRADE FLEXIBLE PAVEMENT MATERIAL
T136	AMERICAN SYCAMORE	15	GOOD	MINOR EXPOSED AND DAMAGED ROOTS IN THE WALKING PATH	PRESERVE	SPOT NARROW SIDEWALK (4' MIN), ABOVE-GRADE FLEXIBLE PAVEMENT MATERIAL
T137	AMERICAN SYCAMORE	11	GOOD	SPARSE CANOPY	PRESERVE	SPOT NARROW SIDEWALK (4' MIN), ABOVE-GRADE FLEXIBLE PAVEMENT MATERIAL
T138	AMERICAN SYCAMORE	13	GOOD	SPARSE CANOPY	PRESERVE	SPOT NARROW SIDEWALK (4' MIN), ABOVE-GRADE FLEXIBLE PAVEMENT MATERIAL
T139	AMERICAN SYCAMORE	13	GOOD/FAIR	VINES ENCROACHING CANOPY FROM ADJACENT FOREST, DEAD BRANCHES	PRESERVE	SPOT NARROW SIDEWALK (4' MIN), ABOVE-GRADE FLEXIBLE PAVEMENT MATERIAL
T140	AMERICAN SYCAMORE	12	GOOD/FAIR	MINOR DEAD WOOD, SPARSE CANOPY	PRESERVE	SPOT NARROW SIDEWALK (4' MIN), ABOVE-GRADE FLEXIBLE PAVEMENT MATERIAL



